

4. Install a local (LAN) printer on a MAC

● Install a local (LAN) printer manually

Note: many brands of printers can't be installed on MAC through TCP / IP protocol . For example, all printer devices of Canon or Epson can't be installed and used through TCP / IP on MAC.

If your printer can't be supported on the MAC for the TCP / IP, Please connect and use your printer through the way which share USB devices on the MAC.

(Only MFP series products have sharing USB devices function)

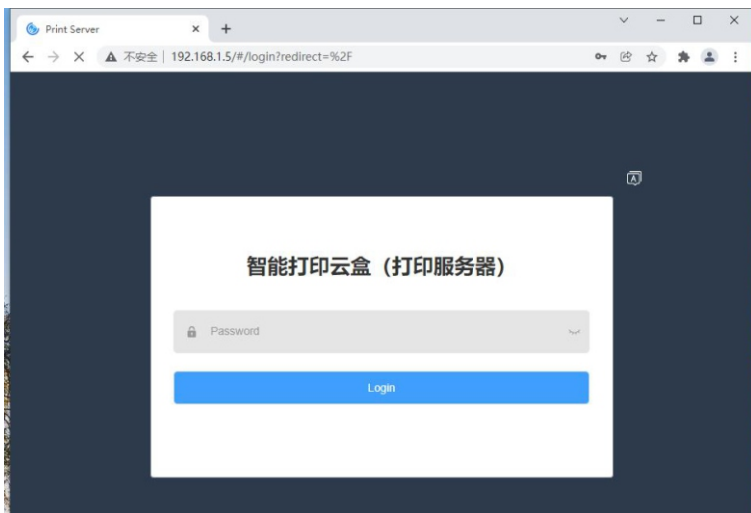
Only the printer which connected to 9100 port of the server is supported on the MAC. Because MAC system can't modify the port number, it only support connecting one printer.

Please pay attention to whether the printer interface is connected to 9100 (USB1) when installing.

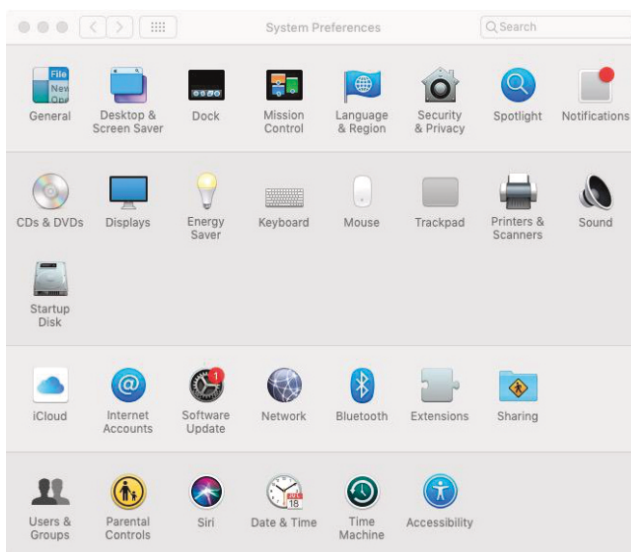
1. Enter the local (local area network) IP address (wireless or wired IP address) of the server in a browser and open it.

If you can normally open the background login interface of the server, it means that the server is connected to your MAC network. Next step is to add a printer to your MAC.

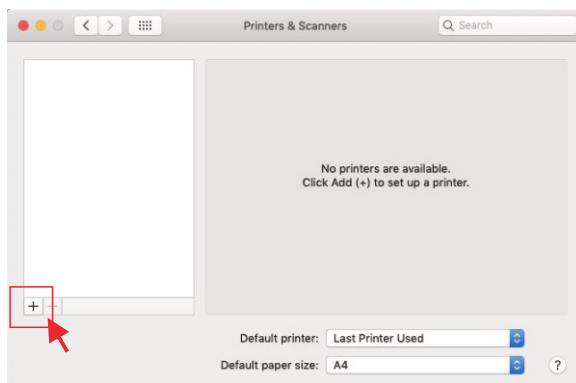
As shown in the picture below:



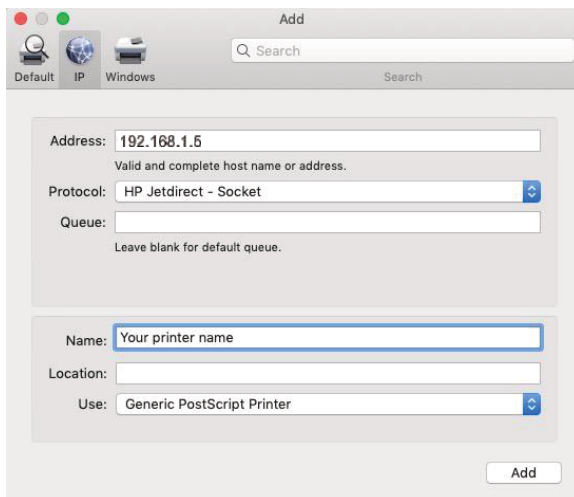
2. Open “System Preferences” —— “Printers & Scanners”



3. Click "+" in the lower left corner to add a printer.

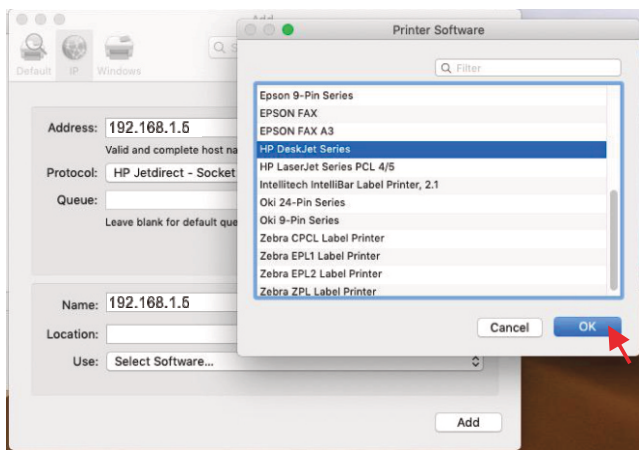


4. Select "IP" and enter the IP address (wireless or wired) of the server. Select "HP jetdirect - socket" for protocol of any printer. Then name your printer.

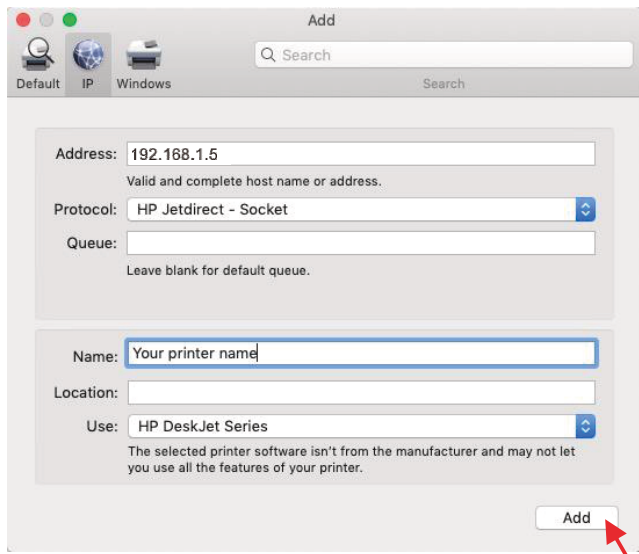


5. Use: select "Select software.." and find your printer driver in the list, Then click "OK".

You can connect the printer and your Mac with a USB cable first, and install the driver of your printer on the Mac. So you can find your printer driver in "Select software..".



6. Click "Add" to add a printer to your Mac.



If your printer can't be supported on the MAC for the TCP / IP, Please connect and use your printer through the way which share USB devices on the MAC.(Only MFP series products have sharing USB devices function)

Only the printer which connected to 9100 port of the server is supported on the MAC. Because MAC system can't modify the port number, it only support connecting one printer.

Please pay attention to whether the printer interface is connected to 9100 (USB1) when installing.

When selecting software, if you can't find your printer model in the list. It means that your printer driver hasn't installed on your MAC, And you need to download the printer driver from a website and install it.